



drake & co
ESTATE AGENTS



56 LANDCROSS ROAD MANCHESTER

£140 Per Week

Student Accommodation Available 1st July 2026 £140ppw*

.This mid terraced property has been completely renovated to an excellent standard! With four double bedrooms over two floors, there is a large communal lounge and separate modern fitted tiled kitchen which overlooks the small rear yard. Tenants also have two stylish bath/shower rooms on the first floor. Located in the heart of Fallowfield opposite Owen's Park Campus, tenants have a short walk to Wilmslow Road's transport links to get to universities in Manchester and the City Centre, as well as the bars and shops in the area.

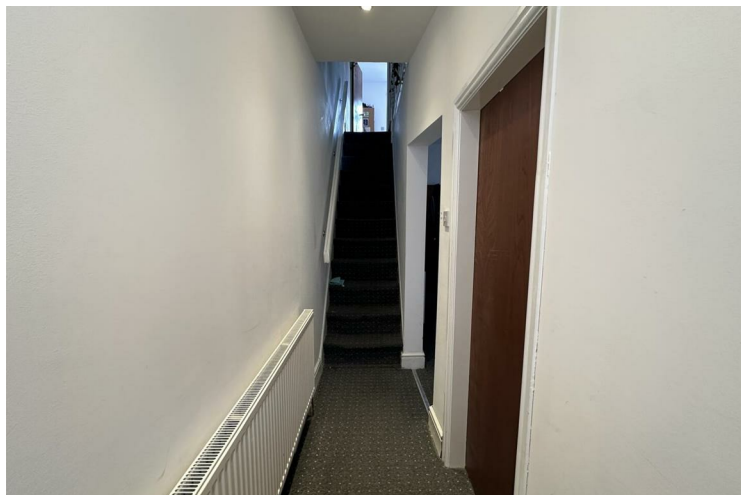
Property Reference: P1504

*Bills Paid Ltd manage the utilities at the property, their Inclusive Bills Package covers: gas, electric, broadband, water and a TV Licence, for an additional £26ppw (terms and conditions apply).

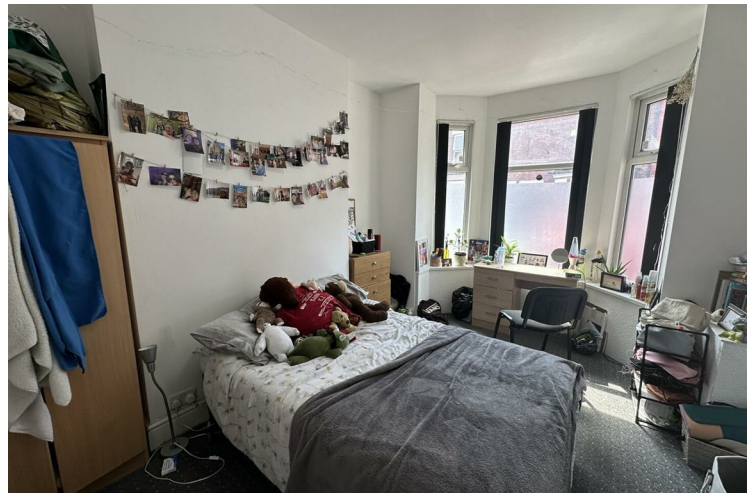
- 12 month tenancy
- Deposit equivalent to 5x weekly rent
- Holding deposit equivalent to 1x weeks rent due to secure the property, this goes towards the total deposit due
- Rent and utilities calculated per calendar month (not four weeks basis)

Don't miss out, contact the office and quote the property reference above to book your viewing today!

Disclaimer: These particulars are believed to be accurate but they are not guaranteed and do not form a contract. Any images, videos and/or floorplans on this brochure are for guidance purposes only and are not necessarily to scale.



- 4 Bedrooms • House • Fallowfield • Fully furnished • 2 Bathrooms/shower rooms • Inclusive Bills £26pppw • Washer/Dryer







Energy Efficiency Rating		
	Current	Potential
<i>Very energy efficient - lower running costs</i>		
(92 plus) A		
(81-91) B		85
(69-80) C		
(55-68) D	68	
(39-54) E		
(21-38) F		
(1-20) G		
<i>Not energy efficient - higher running costs</i>		
England & Wales <small>EU Directive 2002/91/EC</small>		

EPC Rating: D Council Tax Band: B

Agents Note: Whilst every care has been taken to prepare these particulars, they are for guidance purposes only. All measurements are approximate and are for general guidance purposes only and whilst every care has been taken to ensure their accuracy, they should not be relied upon and potential buyers/tenants are advised to recheck the measurements

Drake & Co
Anson Parade
161a Dickenson Road
Rusholme
Manchester
M14 5HZ

0161 224 2134
info@drakes.co.uk
<https://www.drakes.co.uk/>

